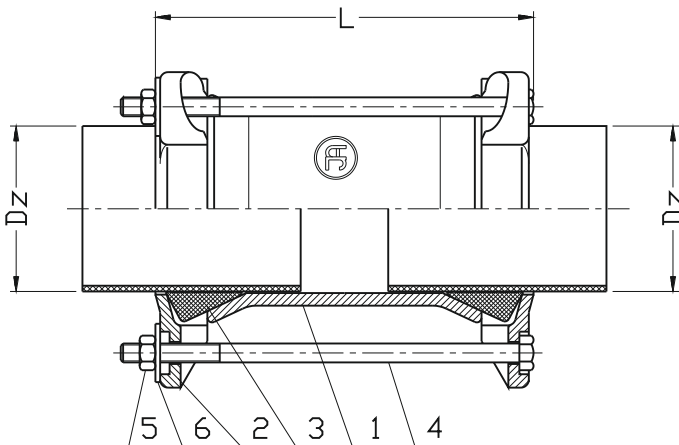


Straight coupling RR type

**PN10
PN16**

WATER



No.	Part	Standard execution
1	Body	Ductile cast iron EN-GJS 500-7
2	Flange	EN 1563
3	Gasket	Rubber EPDM EN ISO1629
4	Screw	Steel Fe/Zn5 Stainless steel A2 EN ISO 4017
5	Nut	Steel Fe/Zn5 Stainless steel A4 EN ISO 4032
6	Washer	Steel Fe/Zn5 Stainless steel A2 EN ISO 7091

DN	D ₂	L	Weight
	[mm]		[kg]
40 / 50	47-60	190	2,2
50 / 65	57-72	210	4,0
50 / 65 / 80	68-85	210	4,5
80 / 100	84-106	210	5,0
100 / 125	103-116 / 108-130	210	7,5
		230	7,0
125 / 150	128-146 / 134-155	210	7,2
		230	7,7
150 / 175 / 200	153-175 / 165-185	210	8,6
		230	8,0
175 / 200	184-207	260	11,5
		260	12,0
200	208-225 / 218-236 / 222-250	260	14,0 / 14,5
		260	14,0 / 14,5
250	246-270 / 264-284 / 282-306	300 / 260	17,0
		300	20,0
300	305-326 / 315-335 / 335-355 / 360-386	260 / 300	21,0 / 23,0
		300	24,0
350	386-410	300	28,0
400	408-435 / 425-458 / 465-500	260 / 300	29,0 / 34,0
		330	40

Product description (standard execution):

- Acceptable axial deviation on each side $\pm 4^\circ$
- EPDM sealing approved for potable water
- Stainless steel or galvanized nuts and screws
- Plastic protection caps at screw ends
- Installation in any position allowed
- Body and flange made of ductile cast iron EN-GJS 500-7
- Grooved gasket absorbs minor imperfections of the pipe surface
- Epoxy coating minimum 250 microns according to EN ISO 12944- 5
- Face to face according to the JAFAR documentation

Application:

Water line networks: potable water and other chemically inert fluids. Connection of straight naked-end pipes made of cast iron iron, asbestos-cement or PVC. Working pressure up to 1.6 MPa, temperature up to +70°C

Test control:

Water pressure test according to EN 1074-1; EN 12266-1
Seat: 1,1x PN
Body: 1,5 x PN