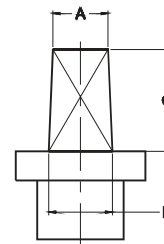
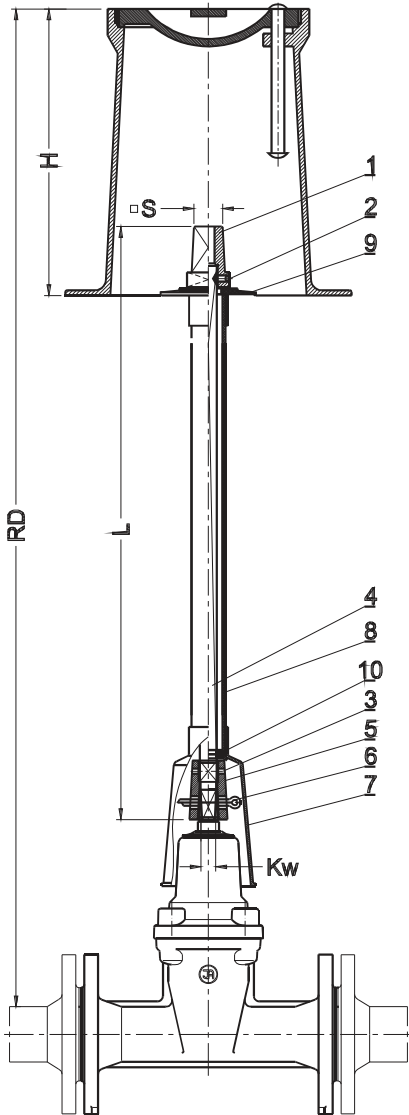


**Extension spindle  
rigid**

SEWAGE

WATER



Cap dimensions:

A = 12 mm	S12
B = 15 mm	
C = 27 mm	S27
A = 27 mm	
B = 32 mm	
C = 50 mm	

No.	Part	Standard execution
1	Cap	Ductile cast iron EN-GJS-400-15 EN 1563
2	Screw	Steel Fe/Zn5 Stainless steel EN ISO 4017
3	Spring pin	Steel 60G; Stainless steel EN ISO 8752
4	Spindle	Galvanized steel Steel Fe/Zn5 EN 10025-2
5	Coupling	Ductile cast iron EN-GJS-400-15 EN 1563
6	Split cotter	Steel Fe/Zn5 Stainless steel EN ISO 1234
7	Pipe bell	Polyethylene PE EN ISO 1872-1
8	Casing liner	Polyethylene PE EN ISO 1872-1
9	Collar	Polyethylene PE EN ISO 1872-1
10	Thrust washer	Polyethylene PE EN ISO 1872-1

- other material variants (like stainless steel 1.4301 or 1.4401) on special request

TYP 9009	L=1000 L=1300 L=1500 [mm]					
K <sub>w</sub>	14	17	17	19	19	19
Armature	DN40/50	DN65	DN80	DN100	DN125	DN150

TYP 9010		L [mm] / Weight [kg]						Remark
DN	K <sub>w</sub>	RD 750	RD 1000	RD 1250	RD 1500	RD 2000	RD 2500	
Hause connector valve	12	445 / 1,5	695 / 2,1	945 / 2,7	1195 / 3,3	1695 / 4,4	-	H=150 Cap S12
	25/32	570 / 1,8	820 / 2,4	1070 / 3,0	1320 / 3,5	1820 / 4,7	-	
40/50	14	-	735 / 2,3	985 / 2,9	1235 / 3,5	1735 / 4,6	2235 / 5,8	H=270 Cap S 27
40/50	14	-	615 / 2,1	865 / 2,6	1115 / 3,2	1615 / 4,4	2115 / 5,6	
65	17	-	620 / 3,0	870 / 3,9	1120 / 4,8	1620 / 6,4	2120 / 8,1	
80	17	-	605 / 3,0	855 / 3,9	1105 / 4,7	1605 / 6,4	2105 / 8,1	
100	19	-	580 / 2,9	830 / 3,7	1080 / 4,6	1580 / 6,3	2080 / 8,0	
125	19	-	550 / 2,8	800 / 3,6	1050 / 4,5	1550 / 6,2	2050 / 7,9	
150	19	-	490 / 2,6	740 / 3,5	990 / 4,3	1490 / 6,0	1990 / 7,7	
200	24	-	445 / 2,6	695 / 3,5	945 / 4,3	1445 / 6,0	1945 / 7,7	
250	27	-	370 / 2,3	620 / 3,2	870 / 4,0	1370 / 5,7	1870 / 7,4	
300	27	-	320 / 2,2	570 / 3,0	820 / 3,9	1320 / 5,6	1820 / 7,3	
350	27	-	-	485 / 3,4	735 / 4,8	1235 / 7,6	1735 / 10,3	
400	32	-	-	310 / 2,5	560 / 3,9	1060 / 6,6	1560 / 9,3	
500	36	-	-	160 / 2,1	410 / 3,0	910 / 5,7	1410 / 8,4	
600	36	-	-	-	285 / 2,3	785 / 5,1	1285 / 7,8	

**Product description (standard execution):**

- Cap made of ductile cast iron EN-GJS 400-15
- Galvanized steel square section 18mm
- Ductile cast iron EN-GJS-400-15 coupling mounted on the valve spindle with the split cotter
- Extension spindle liner cap pipe bell and thrust washer made of PE
- Pipe bell protects against dirt penetration from the ground

**Application:**

Simple and rigid extension of the valve spindle.  
Underground mounted Armature operating.

**Accessories:**

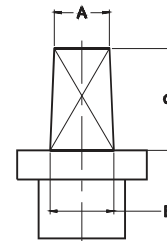
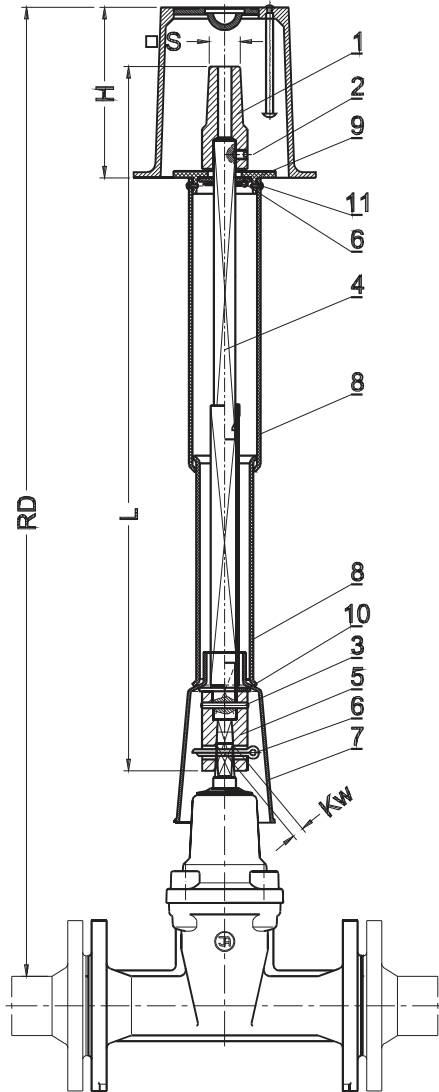
- With pillar handwheel see: 9113
- With pillar for electric actuator see: 9114
- With T-key see: 9015
- With street box see: 9501; 9502; 9503; 9504; 9509

We reserve the rights to modify the production program and the given data without separate notices due to the permanent company development

## Telescopic extension spindle

SEWAGE

WATER



Cap dimensions:

A = 12 mm	S12
B = 15 mm	
C = 27 mm	
A = 27 mm	S27
B = 32 mm	
C = 50 mm	

No.	Part	Standard execution
1	Cap	Ductile cast iron EN-GJS 400-15 EN 1563
2	Screw	Steel Fe/Zn5; Stainless steel EN ISO 4017
3	Spring pin	Steel 60G; Stainless steel EN ISO 8752
4	Spindle	Galvanized steel Steel Fe/Zn5 EN 10025-2
5	Coupling	Ductile cast iron EN-GJS 400-15 EN 1563
6	Split cotter	Steel Fe/Zn5; Stainless steel EN ISO 1234
7	Pipe bell	Polyethylene PE EN ISO 1872-1
8	Casing liner	Polyethylene PE EN ISO 1872-1
9	Collar	Polyethylene PE EN ISO 1872-1
10	Thrust washer	Polyethylene PE EN ISO 1872-1
11	Set screw	Steel; Stainless Steel EN ISO 7053

- other material variants (like stainless steel 1.4301 or 1.4401) on special request

### Product description (standard execution):

- Cap made of ductile cast iron EN-GJS-400-15
- The spindle tightly fitted into the square profile
- The coupling of ductile iron EN-GJS-400-15 mounted on the valve stem with the split cotter
- Casing liner cup pipe bell and thrust washer made of PE
- Pipe bell protects against pollution from the ground
- Height adjuster for setting casing at any height

### Application:

Flexible and safe extension of the valve stem. Underground mounted

### Accessories:

- With pillar handwheel see: 9113
- With pillar for electric actuator see: 9114
- With T-key see: 9015
- With street box see: 9501; 9502; 9503; 9504; 9509

TYP 9011		L [mm] / Weight [kg]			Remark
DN	K <sub>w</sub>	RD 900-1300	RD 1300-1800	RD 2000-2500	
House connector valve	12	1000 / 2,6	1500 / 3,6	2000 / 3,9	H=150 Cap S12
25/32	12	1115 / 2,7	1615 / 3,4	2315 / 4,3	
40/50	14	1070 / 3,2	1570 / 3,2	2270 / 4,1	
40/50	14	-	1447 / 4,0	2147 / 4,8	
65	17	-	1398 / 3,9	2098 / 4,7	H=270 Cap S 27
80	17	-	1398 / 3,9	2098 / 4,7	
100	19	-	1371 / 3,8	2071 / 4,6	
125	19	-	1371 / 3,8	2071 / 4,6	
150	19	-	1289 / 3,7	1986 / 4,9	
200	24	-	1235 / 3,7	1935 / 4,6	
250	27	-	1166 / 3,6	1866 / 4,5	
300	27	-	1107 / 3,5	1807 / 4,4	
350	27	-	*1032 / 5,6	1735 / 8,4	
400	32	-	*858 / 4,7	1560 / 7,5	
500	36	-	-	1410 / 6,7	
600	36	-	-	1285 / 6,0	

\* - dla DN350-DN400 RD=1500-1800

We reserve the rights to modify the production program and the given data without separate notices due to the permanent company development